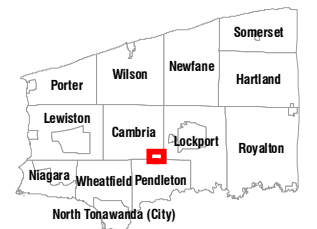


NIAGARA COUNTY
Shovel Ready
Project
TOWN OF CAMBRIA - NEW YORK

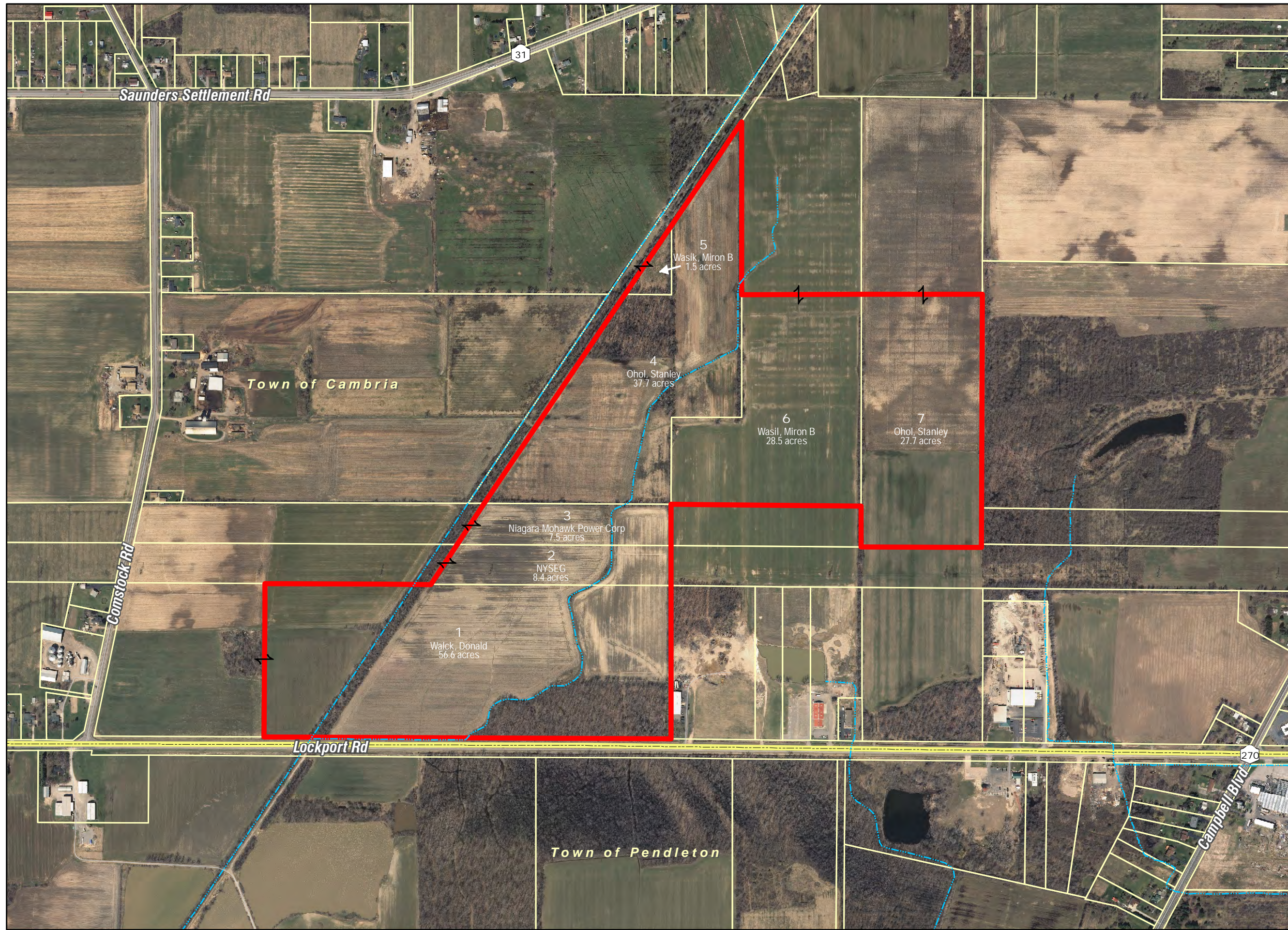
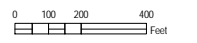
MAP 2 - SITE LOCATION



NIAGARA COUNTY - NEW YORK
NOT DRAWN TO SCALE

LEGEND

- Municipal Boundary
- Parcel Boundary (2009)
- Hydrography
- Project Site



Wendel Duchscherer Architects & Engineers, P.C. shall assume no liability for 1. Any errors, omissions, or inaccuracies in the information provided regardless of how caused or; 2. Any decision or action taken or not taken by the reader in reliance upon any information or data furnished hereunder.
Data Sources: NYS GIS Clearinghouse, Niagara County Real Property Services, National Hydrology Dataset, 2008 Digital Orthomagey